

1. General Information

Framkvæmdasýslan – Ríkiseignir (FSRE) on behalf of the Icelandic Government intends to sell the specially equipped research vessel Bjarna Sæmundsson built in 1970 in Germany and is still in service. The first cruise was in January 1971. The vessel is built as a general research vessel, including fishery and oceanographic research. The propulsion system is of diesel electric type to secure low noise level. These ship expeditions focus on, among other things, a variety of ecological observations, population measurements of the seabed, fish tagging and fishing gear research.

Year 2003, the vessel had a major overhaul which included basically replacement of all three diesel engines, with new power management system, renewal of the hydraulic system, renewal of insulation, lining and inventor in messroom, galley, dayroom, laboratory, room, wet laboratory and wheelhouse.



The seller will take into consideration sustainability, reuse and carbon footprint when reviewing incoming information.

The ship will be sold as is, where it is currently located and will be delivered at Hafnarfjörður Harbor (or at Harbor nearby) when a contract has been signed.

Asbestos is known to be in the ship, but an assessment has not been executed.

Interested buyers will be invited to a site inspection if requested. Further information will be launched into FSRE website <https://www.fsre.is/auglysingar/utbod/>. For further questions send an email to eignasala@fsre.is

FSRE operates under the auspices of the Ministry of Finance and Economic Affairs.

2. Questions for Interested Participant - Next steps

FSRE reserves the right to contact those who reply for further information.

FSRE reserves the right to reject all offers.

3. Information about the Vessel Bjarni Sæmundsson RE 30

ICETRA No:	1131
IMO No.:	7017466
MMSI No.:	251199000
Call Sign:	TFEA
ICES Ship code:	46BS
Flag:	Icelandic
Homeport:	Reykjavík
Classification:	DNV (GL) X100 A5 E1 Fishery Research vessel MXC E1 AUT
Building Year:	1970
Yard:	Schiffbau Gesellschaft Unterweser Shipyard, Bremerhaven Germany

Main Dimensions:

Length o.a.:	55.87 m
Length p.p.:	49.00 m
Breath mld.:	10.60 m
Depth to deck 2. (trawl deck)	7.00 m
Depth to deck 1.:	4.65 m
Max draft.:	4.40 m
Displacement at 4.40 draft.:	1378 t

Light Weight.:	1030 t
Hold size.:	65 m ³
Fuel oil tanks	198 m ³
GT.:	822
Grt.:	777

Propulsion:

The diesel electric propulsion system is based on three diesel engines and two tandem connected DC electrical motors.

Engines:	3x Deutz AG Werk Mannheim TBD 616 V12 585 kW @ 1500 rpm 400V/230V 50hz
Propulsion motor:	2x515 kW @440 V, 200 RPM air cooled, make AEG
Propeller:	2800 mm Diameter, max. 200 RPM
Thrusters:	Retractable 360° Bow Thruster Electrically Driven, 130 kW

4. Electronics:

The vessel is equipped with basic marine research and oceanographic equipment and is considered viable for silent ship operations.

The main electronic equipment is:

- Simrad APC-10 Sonar
- EK-60 echosounder
- 2 pcs. Furuno GPS compasses
- TimeZero computer 2 pcs. (without license)
- Olex navigation computer 1 pcs. (without license)
- Wind speed measuring instrument
- Seawater temperature indicator
- Radar Furuno FAR-2218 X-Band
- Radar Furuno FAR-2137 S- Band
- Furuno Navtex NX-700
- Furuno GPS GP-170
- Furuno GPS GP-33
- Simrad Autopilot AP-70
- GMDSS receivers
- Sailor VHF hand receivers 3 pcs.
- Marport receivers (no sensors)

5. Deck Equipment:

The vessel is equipped with numerous winches for towing and scientific purposes. There are two main hydraulic systems in the vessel, a low-pressure system for the main trawl winches and a high-pressure system for the auxiliary and scientific winches. The vessel has a stern ramp

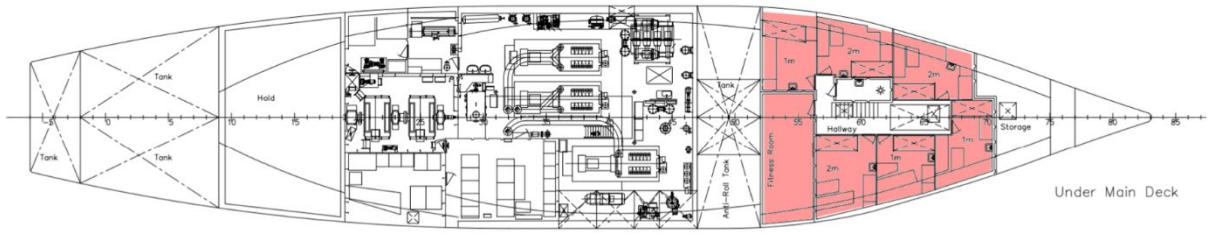
for operation of a bottom and pelagic trawl gear, a fish receiving bin and a wet fish laboratory in front of the fish bin on the main deck.

- Two (2) main trawl winches low pressure (174hp), 3650m of Ø 26mm wire
- One (1) Net drum
- Two (2) Sweep line winches
- Two (2) Gilson Winches
- Two (2) backstrap winches
- Tree (3) winches for research equipment, (plankton, hydrographic)
- Deck crane -Palfinger 14tm
- MOB boat crane
- Gantry for operation of research rosette

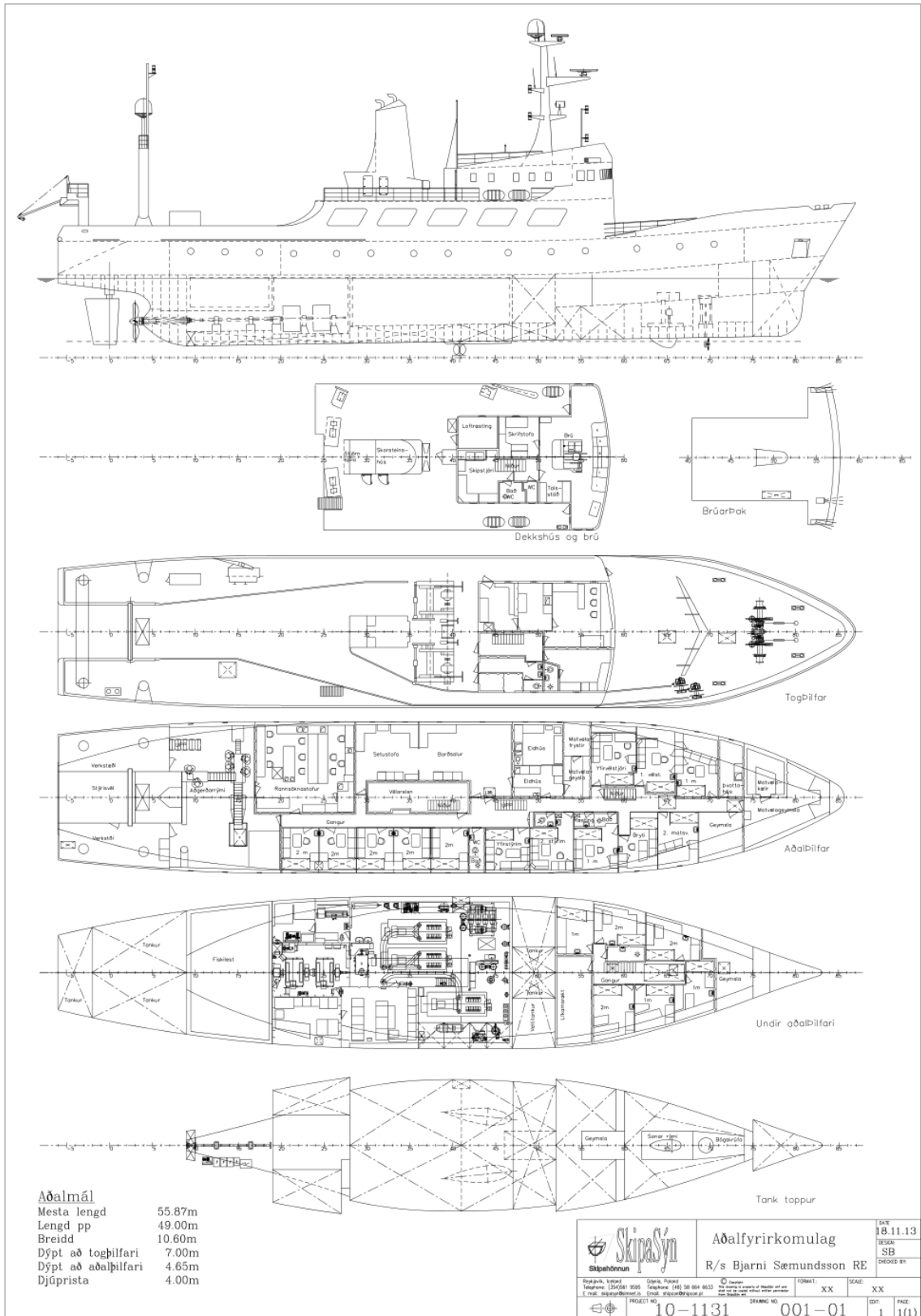
6. Laboratories and Living Quarters:

The vessel is equipped with laboratories and research areas. Dry and wet laboratories, acoustic center. Totally there are cabins for a crew of twenty-nine (29), in eight (8) double cabins and thirteen (13) single cabins. All cabins are equipped with sinks and two cabins have sinks, toilets and shower. Altogether there are three showers and six toilets for public use. See also drawings in chapter 7.

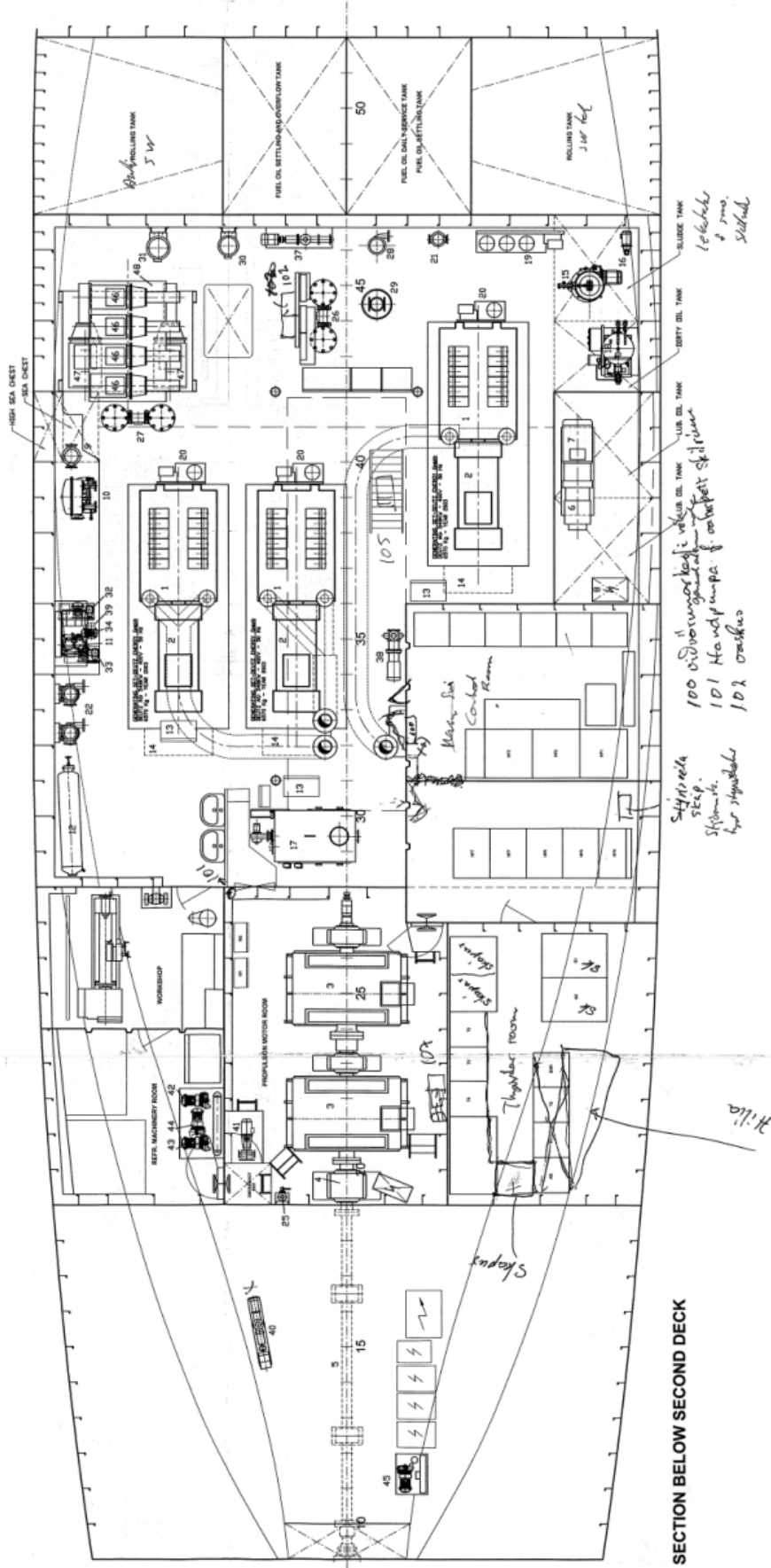




7. Drawings



 SkipsáSyn SkipsáSynn	Aðalfyrirkomulag R/s Bjarni Sæmundsson RE	DATE 18.11.13
		DESIGN SB
PROJECT NO. 10-1131	DRAWING NO. 001-01	SCALE XX
SHEET 1	TOTAL SHEETS 1(1)	SCALE XX

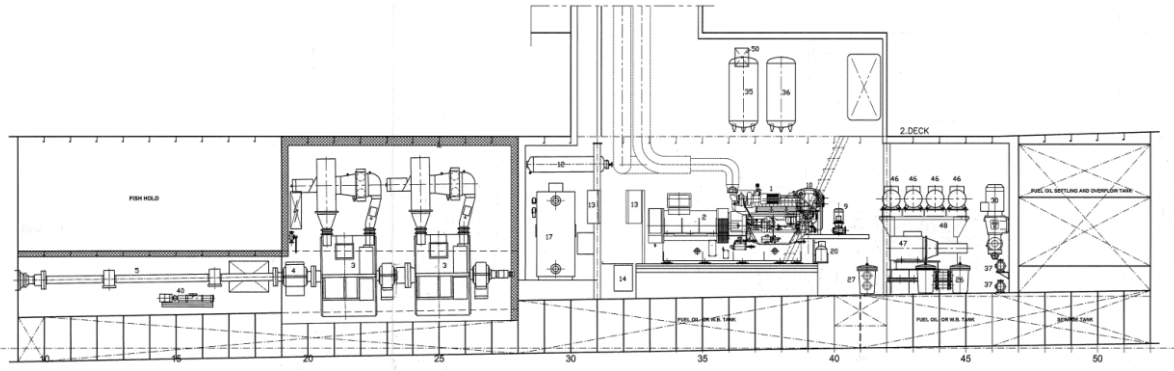


100 ördörvörögkötő
 101 Hővezető
 102 Ördör

Szigetelés
 szep.
 szilárd
 hőszigetelés

- 105 frakció
- 106 sz. fél berendezés
- 107 sz. fél berendezés
- 108 sz. fél berendezés
- 109 sz. fél berendezés
- 110 sz. fél berendezés
- 111 sz. fél berendezés
- 112 sz. fél berendezés
- 113 sz. fél berendezés
- 114 sz. fél berendezés
- 115 sz. fél berendezés
- 116 sz. fél berendezés
- 117 sz. fél berendezés
- 118 sz. fél berendezés
- 119 sz. fél berendezés
- 120 sz. fél berendezés
- 121 sz. fél berendezés
- 122 sz. fél berendezés
- 123 sz. fél berendezés
- 124 sz. fél berendezés
- 125 sz. fél berendezés
- 126 sz. fél berendezés
- 127 sz. fél berendezés
- 128 sz. fél berendezés
- 129 sz. fél berendezés
- 130 sz. fél berendezés
- 131 sz. fél berendezés
- 132 sz. fél berendezés
- 133 sz. fél berendezés
- 134 sz. fél berendezés
- 135 sz. fél berendezés
- 136 sz. fél berendezés
- 137 sz. fél berendezés
- 138 sz. fél berendezés
- 139 sz. fél berendezés
- 140 sz. fél berendezés
- 141 sz. fél berendezés
- 142 sz. fél berendezés
- 143 sz. fél berendezés
- 144 sz. fél berendezés
- 145 sz. fél berendezés
- 146 sz. fél berendezés
- 147 sz. fél berendezés
- 148 sz. fél berendezés
- 149 sz. fél berendezés
- 150 sz. fél berendezés

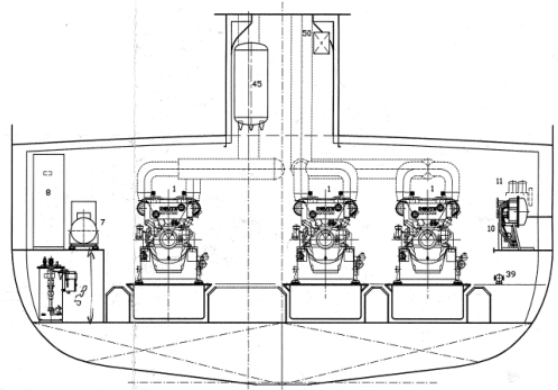
SECTION BELOW SECOND DECK



LONGITUDINAL SECTION LOOKING TO PS

NEW EQUIPMENT, PART ETC. - YEAR 2003

54				
53				
52				
51				
50	1	STERN-TUBE OIL HAND PUMP		
49				
48	1	HYDR. OIL TANK		ca. 500 l
47	2	HYDR. OIL PUMP-MOTOR 75KW	GR80 SMT16B 1200	
46	4	HYDR. OIL PUMP-MOTOR 37KW	GR70 SMT16B 660	
45	1	REFR. COMPRESSOR F. HOLD		
44	1	REFR. COMPRESSOR F. HOLD	FRASCOLD B2 13V	15KW - 138m ³ /h
43	1	REFR. COMPRESSOR F. PROVIANT	FRASCOLD A-1-7	10KW - 69m ³ /h
42	1	REFR. COMPRESSOR F. PROVIANT	FRASCOLD B129V	11KW - 89m ³ /h
41	1	S.W. PUMP F. RECEIVING BIN	DESMI S32-E3-119/A09	5 m ³ /h-15 mVs
40	1	S.W. PUMP - PLANKTON, LAB.		
39	1			
37	2	SEWAGE DISCHARGE PUMP	MDHND NE 50	15 m ³ /h-20 mVs
36	1	F.W. HYDROPHORE PRESSURE TANK	DIN 4810	500 l - 35 kg/cm ²
35	1	S.W. HYDROPHORE PRESSURE TANK	DIN 4810	500 l - 35 kg/cm ²
34	1	RES. F.W. AND S.W. PUMP		
33	1	S.W. HYDROPHORE PUMP		
32	1	F.W. HYDROPHORE PUMP		
31	1	S.W. PUMP - FIRE PUMP	SPECK 50/250	60 m ³ /h-55.5 mVs, 13.2 KW
30	1	BILGE- AND RES. FIRE PUMP	MDHND NE 80	40 m ³ /h-30 mVs
29	1	FUEL OIL TRANSFERPUMP	MDHND NE 50	20 m ³ /h-30 mVs
28	1	S.W. BALLAST PUMP	LDEVE VKLW 61	40 m ³ /h-30 mVs
27	1	S.W. FILTERS - FIRE PUMP ETC.		
26	1	S.W. FILTERS FOR ENGINES		
25	1	STERN-TUBE OIL HAND PUMP	DIN5497 - A2	25 l/min
24	1			
23	1			
22	2	S.W. PUMP FOR SHAFT MOTOR	LDEVE VKLW 40	10.0 m ³ /h
21	1	TRANSFER PUMP DAY TANK	IMO ACG 52-2N2F	10 m ³ /h-20 mVs
20	3	LUB. OIL FILTER	EUROPFILTER AB	
19	1	FUEL OIL FILTERS	EUROPFILTER AB, Aegir 2000	
18	1	OILY WATER SEPARATOR	RVD SKT/S 1.0	10 m ³ /h
17	1	HOT WATER BOILER	PYRO E1127	221KW
16	1	SLUDGE PUMP-Waste oil pump	IMO	ca.20 m ³ /h-20 mVs
15	1	FUEL OIL SEPARATOR	WESTFALIA DN 1016	ca. 1500 l/h
14	3	STARTING ACCUMULATORS		205 AH@10V
13	3	ENGINE SAFETY SYSTEM	DEUTZ AG	
12	1	WORKING AIR RECEIVER	DIN 6276	ca. 180 l
11	1	AIR COMPRESSOR (WORKING AIR)	AUTOMAN 1504T/A	12 bar, 950 RPM, MOTOR 11KW
10	1	F.W. GENERATOR	ALFA LAVAL AW JVP 16 C40	
9	1	S.W. PUMP F.W. GENERATOR		
8	1	DMFORMER - CONTROL PANEL	NAUST MARINE	
7	1	DMFORMER - MOTOR	LDNNE 148G 293-4AA60-Z 250M	55KW at 1480 RPM, 400V, 50 Hz
6	1	DMFORMER - GENERATOR	STAMFORD UC-M2246R	65KVA at 1500 RPM, 400V, 50 Hz
5	1	INTERMEDIATE PROPELLER SHAFT		
4	1	THRUST BEARING	EISENWERKE WOLFEL	
3	2	SHAFT MOTOR	AEG	2x515KW, 200 RPM, 2x440V
2	3	POWER UNIT - GENERATOR	AVK - BSG62 L 1 4	685KVA at 1500 RPM
1	3	POWER UNIT - ENGINE	DEUTZ MWM - TBD 616 V12	588KW at 1500 RPM



SECTION FR. 38 LOOKING AFT

PDS NO.	QTY	DESCRIPTION	TYPE	TECHN.DATA
LEBIR - CLIENT		BJARNI SEMUNDSSON RE 30		MV - SCALE 1:50
HEM - SUBJECT		ENGINE ROOM ARRANGEMENT		DAGS - DATE 10.04.2003
DAGS - SAMPLETEXT / LEBIR		<p>AFLVIS</p> <p>TEKNIÐSTOFA - TEKNIÐJONUSTA GUNDRÓS 35, 800 HAFNIR, KILME TLF. 4364 461 4610, FAX 4364 461 4612, www.aflvis.is / E-mail aflvis@aflvis.is</p>		SKIPASKYRSL 1131 GERT AF - DRAWN BY TERNING NR. - ENG. NO. 10403

8. Exclusion of Participant

FSRE reserves the right to refuse and dismiss any unclear information that do not contain the information required by the RFI documents.

9. Grounds for Excluding Participant

A Participant convicted by final judgment for the following offences shall be excluded from participating in this RFI procedure:

- 1) participating in a criminal organization,
- 2) corruption,
- 3) fraud,
- 4) terrorism, or for offences that are linked to terrorist acts,
- 5) money laundering or the financing of terrorist acts,
- 6) child labour or other form of trafficking in human beings.

The obligation to exclude a Participant also applies when a person who has been convicted by final judgment for a violation of paragraph 1, is a member of the administrative, management or supervisory board of the relevant economic operator, or is an authorized representative, is authorized to make decisions or has a controlling position in the relevant economic operator. The Participant shall be excluded from participating in this RFI process if in violation of duty to pay taxes, pension fund premiums or other statutory fees and there has been a final finding by a court of law or by an administrative authority where the participant is registered, or in a member state of the EEC. The Participant shall hand in documentation according to the above-mentioned which may not be older than 3 months if requested.

In addition, the contracting authority reserves the right to exclude an economic operator from participating in this RFI process if other reasons for exclusion listed in Article 68 of the PPA apply to the economic operator.

The contracting authority reserves the right at any time to call for further documentation.

By signing this RFI, the Participant confirms that the above grounds for exclusion do not apply to the economic operator, to individual persons on the board of directors, the executive board or the supervisory board, nor to individual authorized representatives, authorized to make decisions, or have a controlling position in the relevant economic operator.

By Submitting Information, the Participant confirms that the above exclusionary circumstances do not apply to him (the company), the individuals in the management, management or supervisory body of the company, nor to persons authorized to represent, make decisions or control it.

10. Business Ethics

Corruption and other financial fraud are not acceptable. The Participant will work actively against all forms of corruption, extortion and money laundering.

A Participant is required to have an ethical framework in place which applies to the Participant's employees. The rules shall prohibit offering, promising or giving unfair benefits to customers, Participant and public employees. The same applies to the receipt of such benefits. See further terms and conditions regarding RFI documents on the FSRE website where there are information regarding penalty for Bribery offences.

11. Acts of Law and Regulations

The Icelandic Public Procurement Act No.120/2016 does not apply to this RFI or regulations based on the Act or the Contract that may be signed following this RFI.

This RFI is published to ensure equality for those interested.

12. Questions for Interested Buyers

The next steps in the process will largely depend on the answers received.

FSRE reserves the right to contact those who reply for further information.

Please answer the following questions.

Note: Each file may not exceed 50mb.

- a. Information about buyer such as: Name, Profession, Country, ID number, Representative of the Company and short overview
- b. What are your intentions regarding the ship?
- c. Please feel free to add any other information regarding the project